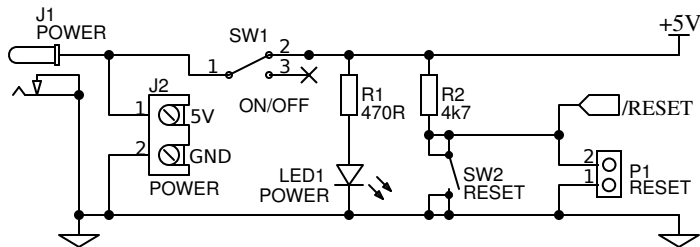
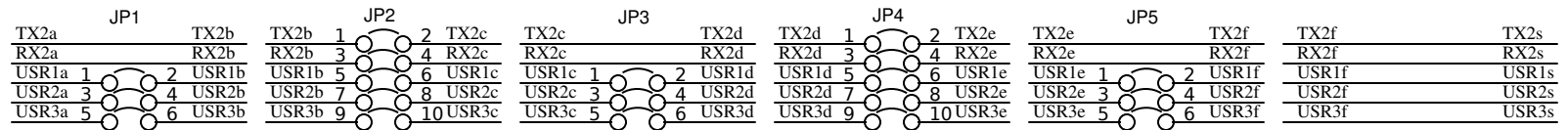
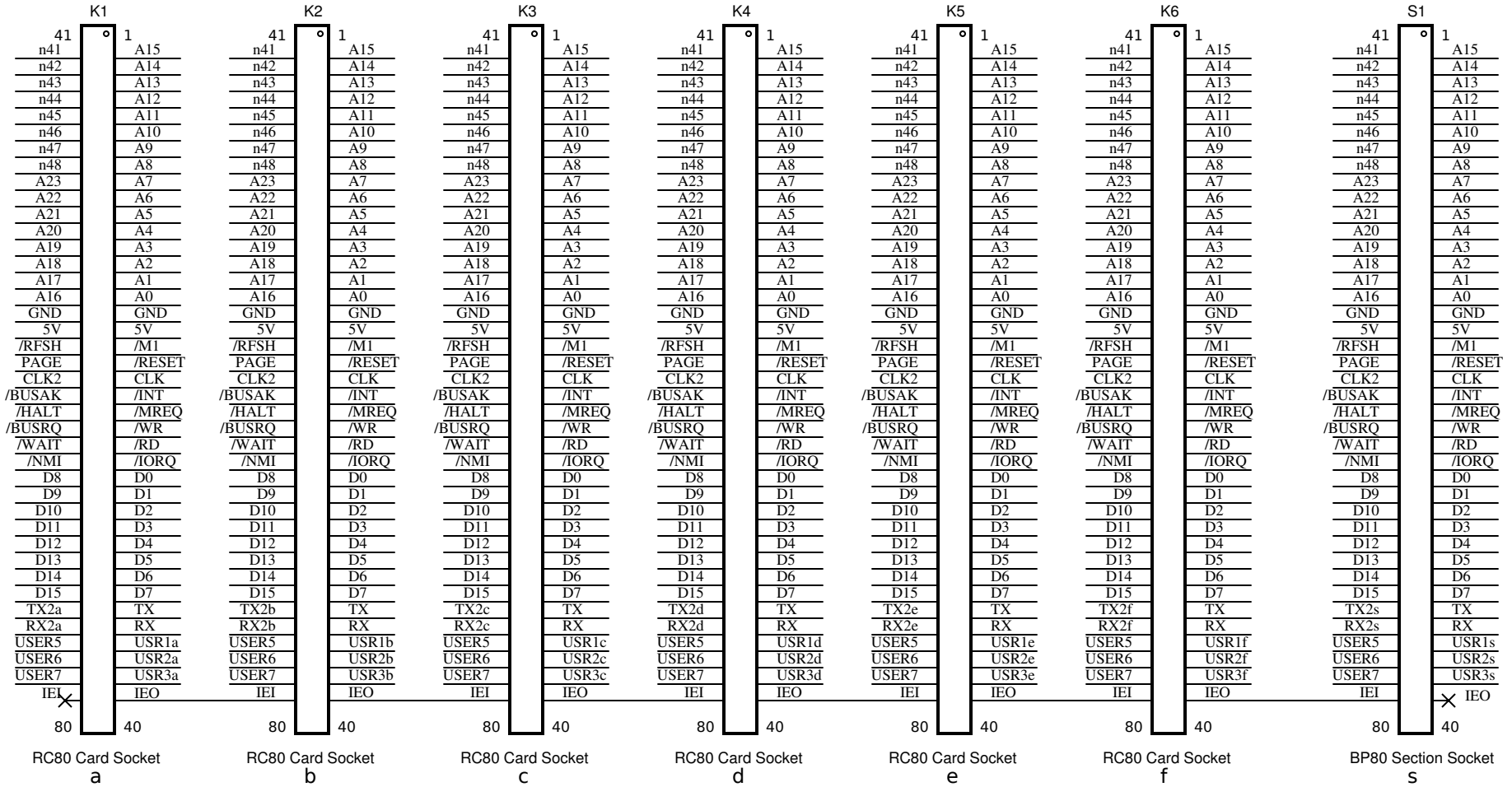
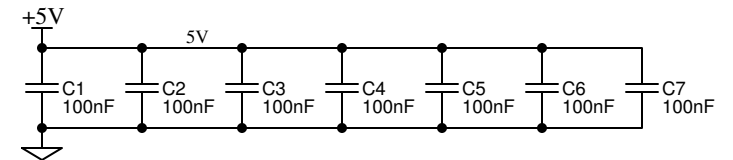


Power supply input instead of section plug.



Jumpers allow some signals TX2, RX2, USER1, USER2 and USER 3 to be isolated from adjacent sockets. These signals are normally also isolated from adjacent backplane sections, but can be linked via solder pads.

RC80 (or RC2014/80) is an unofficial variant of the RC2014 bus. Two USER pins are committed to an interrupt daisy chain, while others can be optionally isolated. Signals A16 to A23 have been assigned, although there is nothing special about these so they can be used for any purpose.



SC Modular Backplane System

TITLE: Six RC2014/80 slots with power input		REV: 1.0.1
SC112: Modular Backplane		
Date: 2018-08-16	Sheet: 1/1	
EasyEDA V5.5.12	Drawn By: Stephen C Cousins	